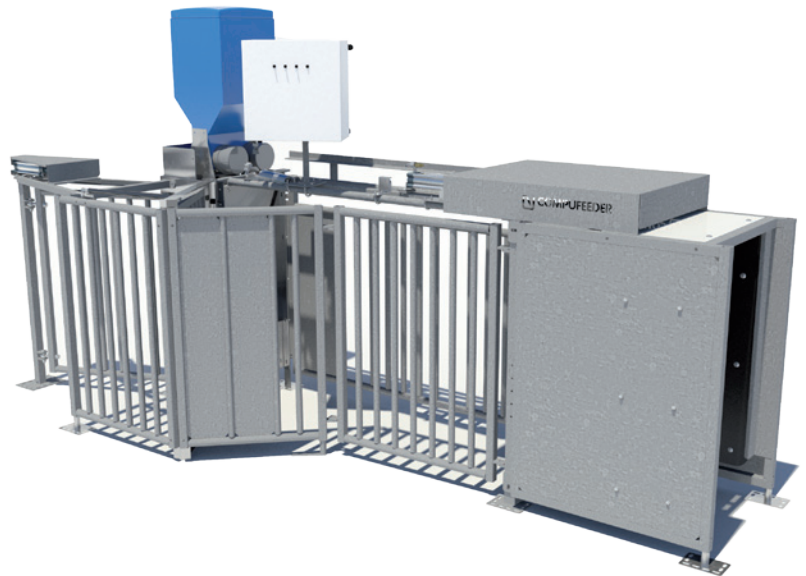


Dear user of the Compufeeder feeding station,

Since the acquisition of the Electronic Sow Feeding System from Insentec late last year we worked hard to develop and prepare the system for the future.

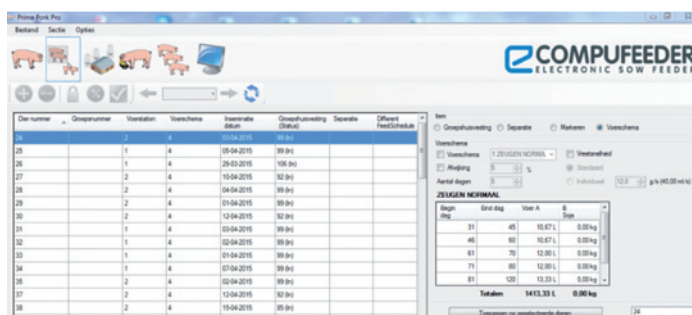
With this newsletter we want to inform you about these new developments and the various new opportunities for you as a user or reseller of the system.

We also added an article to this letter with tips and advices about how to install the new Windows 10 version which is available at the end of this month.



PPP software

The PPP software which was already introduced by Insentec as the successor of PPW has now been updated. PPP can be used on 32 as well as on 64 bit PC's and also runs on Windows 8.



Many parts of the program are now clearer and give the user more possibilities to create own lists which are printable also. We are now working on the last practice tests and expect to release this new version shortly.

Transponders and animal identification

By using Full ISO recognition on new systems you are completely free in transponder choice. Different transponders types can be used in the same system. With Auto Tuning, the recognition will be optimized and tuning the antennas is not necessary anymore.



Handheld terminal and PPP Mobile

Fast and wireless data communication and collection become more and more important aspects in modern farming. Because it was technically impossible to realize all wishes with the old familiar Porto Reader, we decided to expand the product range with a new handheld terminal.

From June 2015 we work with the Motorola Workabout Pro 4 with integrated Agrident RF reader. This is basically a handheld mobile computer which you can use not only for the new PPP Mobile software, but also for many other Windows Mobile applications.



The new PPP mobile software enables communication with the PPP program automatically. The program makes it possible to consult, implement and modify all animal data with the hand terminal. Of course also the links with management programs such as Agrovision are fully supported. With the new PPP Mobile software we are doing also the last practice tests and when these are finalized the new Compufeeder Agrident Reader will be available also.

Windows 10

From July 29 the new Windows 10 version will be available for everyone to download and install.

As a user of the Compufeeder feeding system, there are two possibilities:

If you are still working with the old PPW program installing Windows 10 is not possible because the program doesn't work anymore after. We advise you not to download the version and to make sure that it does not happen automatically and to avoid that other users of your PC do this by accident.

If you have switched already to the PPP program then upgrade to Windows 10 will not cause much problems. It may be possible that the communication with the process computer doesn't work anymore because basic settings in Windows 10 do not work together with the installed drivers for communication with Compufeeder.

To use the drivers you need to adjust some basic features in Windows 10.

A description how to do this can be found on our website www.compufeeder.nl

Of course we are always at your disposal to help if you do not succeed to change the settings properly.



Handelsweg 24, 8152 BN Lemelerveld, Holland

T: +31(0)572 37 19 49

I: info@compufeeder.nl

E: www.compufeeder.nl